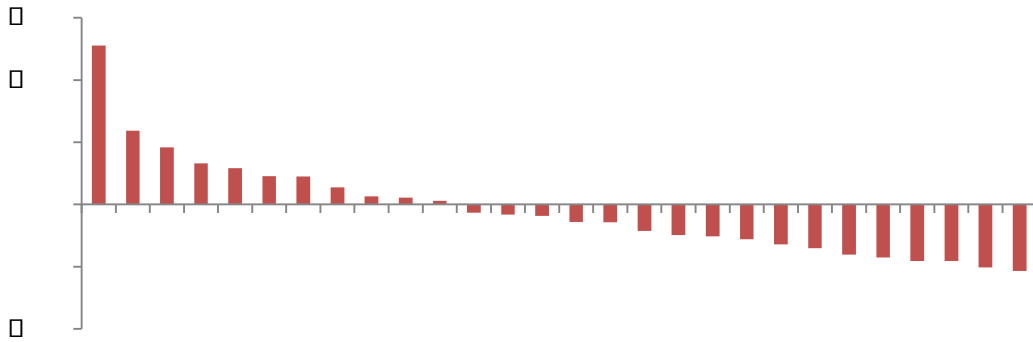


目 录

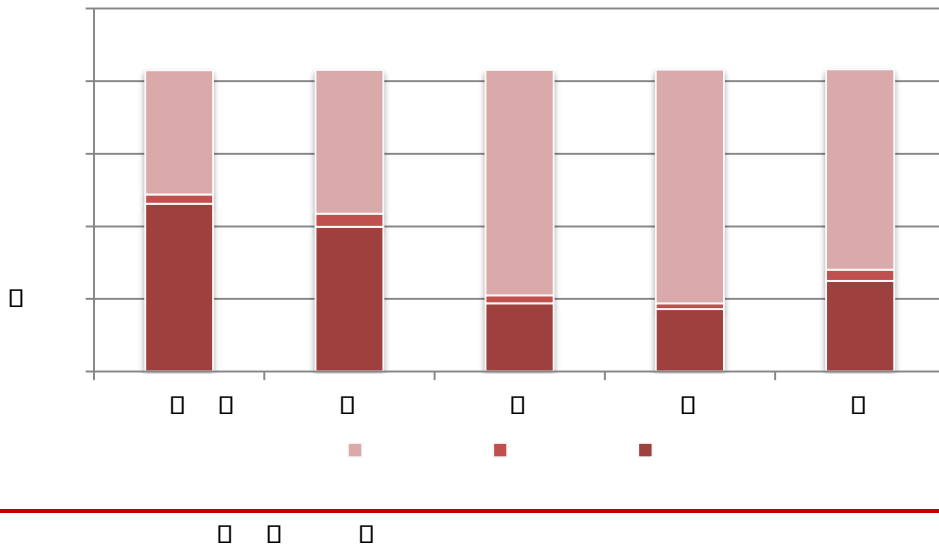
.....	2
.....	2
.....	2
.....	3
.....	3
.....	3
30	4
.....	4
.....	4
.....	5
30 A	5
.....	5
.....	6
1	6
2 1 PMI 1.5	7
3 IPO	8
4 2019 GDP 2020	9
5 2021	10
6	11

	3496.33	0.38%
	15007.30	1.25%
	10052.68	0.60%
	3193.71	2.07%
300	5483.41	2.46%
	29288.68	3.55%
500	3886.83	4.65%
(WIND 2021-2-1 2021-2-5)		

2021-2-1 2021-2-5 A
 0.38% 3496.33 1.25% 15007.30
 2.07% 3193.71

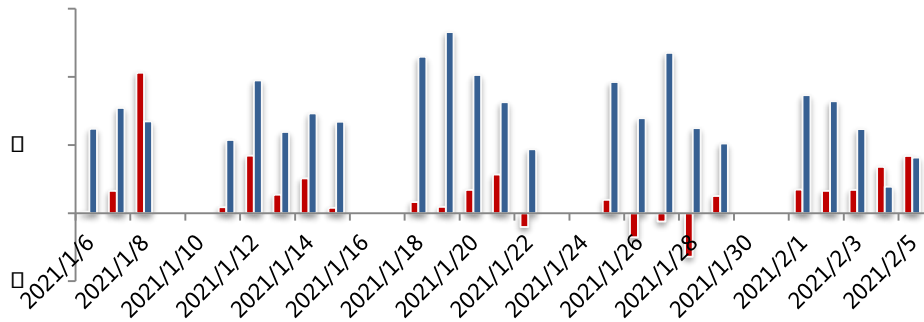


□ □ □



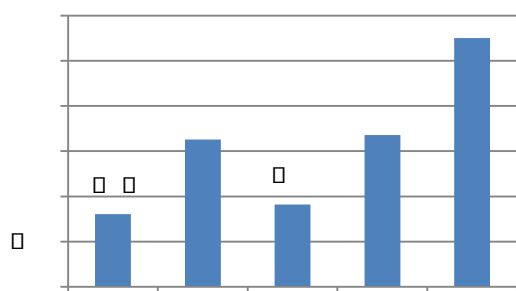
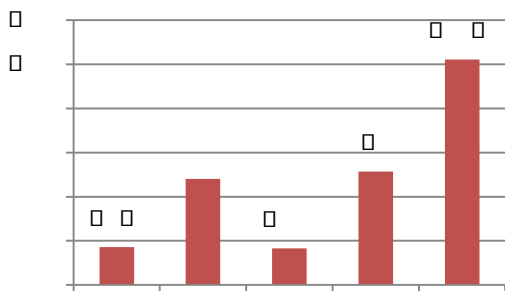
	253.26	581.51
	253.26	581.51
	652.83	3687.74

□



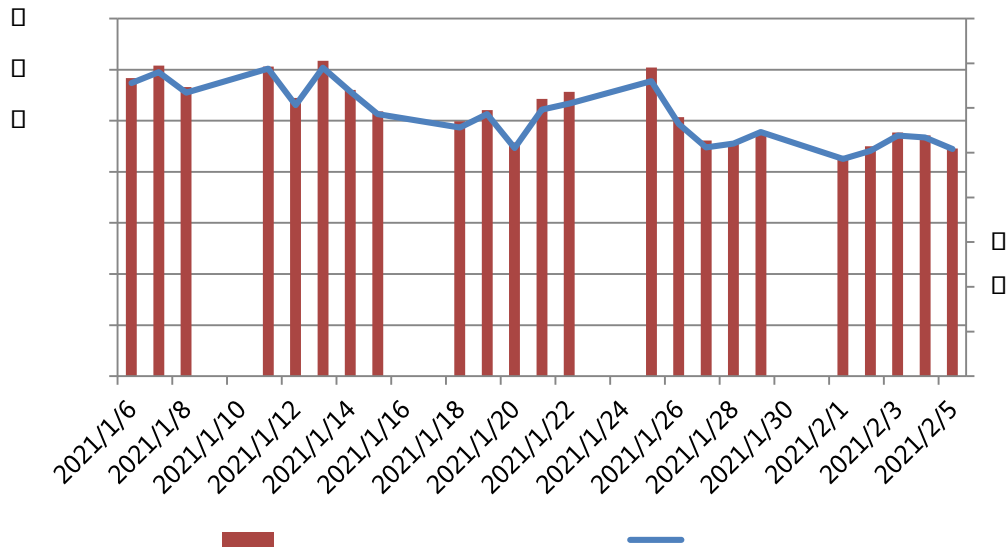
□

QFI I	25565.70	2.93%	3.94%
	25549.62	2.93%	3.94%
	16.07	0.00%	0.0025%



□

30 A



□

"

"

A

PMI

shi bor

A

"

"

1

2 5

2004

2019

+

+

2021

2 1

PMI 1.5

2 1

2021 1

PMI

1.5

51.5

2020 7

PMI

2021 1

PMI

51.3

0.6

2020 9

2021 1

2020 7

2021 1

3

IPO

2 7

IPO

"

"

1

2

"

"

12

3

4

5

6

7

8

12

9

10

12

36

4

2019 GDP

2020

2019

GDP

GDP

"

"

2020 GDP

2019

GDP

986515

()

4350

6.0%

0.1

2019 GDP

4350

GDP



	GDP		2020
2019		GDP	GDP
		4	3

5 2021

	2021		10%
		7%	

GDP

6

2 7

24

" " " "

CMF

" "

" "

" "

" "

" "
